



Noise Monitoring Result

Day Time (0700 - 1900hrs on normal weekdays)

Location: M1a - Footbridge at EX-Wanchai Harbour Road Sports Centre

Date	Time	Weather	Measurement Noise Level			Baseline Level	Construction Noise Level	Limit Level
			Leq	L10	L90	Leq	Leq	Leq
Unit: dB(A), (30-min)								
30/9/19	8:06	Fine	70.8	74.2	63.8	72	71	75
8/10/19	10:42	Cloudy	71.4	74.5	64.3	72	71	75
14/10/19	10:30	Rainy	70.2	74.1	63.8	72	70	75
22/10/19	13:00	Fine	71.5	74.8	62.7	72	72	75



Noise Monitoring Result

Day Time (0700 - 1900hrs on normal weekdays)

Location: M2b - Noon-day gun area

Date	Time	Weather	Measurement Noise Level			Baseline Level	Construction Noise Level	Limit Level
			Leq	L10	L90	Leq	Leq	Leq
Unit: dB(A), (30-min)								
30/9/19	8:52	Fine	67.5	71.2	63.4	68	68	75
8/10/19	11:20	Cloudy	66.7	71.0	62.4	68	67	75
14/10/19	11:09	Rainy	67.4	72.5	62.3	68	67	75
22/10/19	13:38	Fine	67.1	72.4	63.1	68	67	75

Location: M3a - Tung Lo Wan Fire Station

Date	Time	Weather	Measurement Noise Level			Baseline Level	Construction Noise Level	Limit Level
			Leq	L10	L90	Leq	Leq	Leq
Unit: dB(A), (30-min)								
30/9/19	9:36	Fine	66.6	71.1	62.4	69	67	75
8/10/19	13:00	Cloudy	66.9	72.4	61.7	69	67	75
14/10/19	13:02	Rainy	68.0	73.6	61.9	69	68	75
22/10/19	14:16	Fine	68.7	73.1	62.3	69	69	75



Noise Monitoring Result

Day Time (0700 - 1900hrs on normal weekdays)

Location: M4b - Victoria Centre

Date	Time	Weather	Measurement Noise Level			Baseline Noise Level	Construction Noise Level	Limit Level
			Leq	L10	L90	Leq	Leq	Leq
Unit: dB(A), (30min)								
30/9/19	13:00	Fine	66.3	70.8	60.0	67	66	75
8/10/19	13:39	Cloudy	65.8	70.1	61.2	67	66	75
14/10/19	13:43	Rainy	66.7	71.2	60.7	67	67	75
22/10/19	14:53	Fine	65.4	70.4	60.2	67	65	75

Location: M5b - City Garden

Date	Time	Weather	Measurement Noise Level			Baseline Level	Construction Noise Level	Limit Level
			Leq	L10	L90	Leq	Leq	Leq
Unit: dB(A), (30min)								
30/9/19	13:41	Fine	67.4	73.5	61.1	68	67	75
8/10/19	14:21	Cloudy	67.3	74.4	61.5	68	67	75
14/10/19	14:26	Rainy	66.3	73.2	61.1	68	66	75
22/10/19	11:28	Fine	67.6	73.8	61.7	68	68	75

Location: M6 - HK Baptist Church Henrietta Secondary School

Date	Time	Weather	Measurement Noise Level			Baseline Level	Construction Noise Level	Limit Level
			Leq	L10	L90	Leq	Leq	Leq
Unit: dB(A), (30-min)								
30/9/19	14:25	Fine	69.6	74.2	62.8	71	70	70
8/10/19	14:58	Cloudy	68.6	73.7	63.0	71	69	70
14/10/19	15:07	Rainy	69.5	74.8	63.3	71	70	70
22/10/19	10:54	Fine	69.4	73.7	62.4	71	69	70



Noise Monitoring Result

Day Time (0700 - 1900hrs on normal weekdays)

Location: M7e - International Finance Centre (Eastern End of Podium) (Reference Station)

Date	Time	Weather	Measurement Noise Level			Baseline Level	Construction Noise Level	Limit Level
			Leq	L10	L90	Leq	Leq	Leq
Unit: dB(A), (30-min)								
30/9/19	15:08	Fine	66.4	70.4	61.9	67	66	N/A
8/10/19	15:45	Cloudy	66.5	69.6	61.3	67	67	N/A
14/10/19	15:48	Rainy	66.1	70.1	60.6	67	66	N/A
22/10/19	16:20	Fine	65.8	70.0	60.1	67	66	N/A

Location: M7w - International Finance Centre (Western End of Podium)

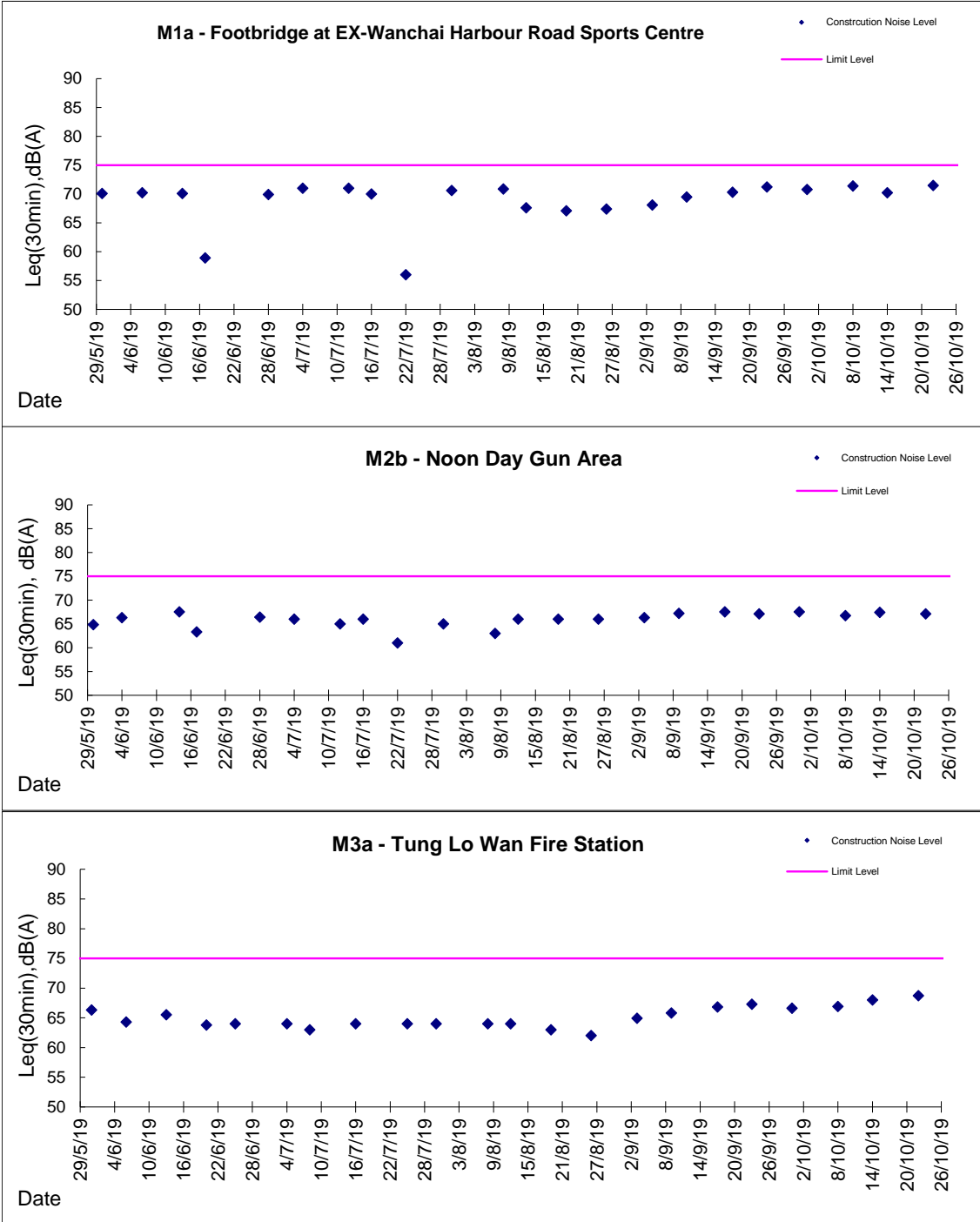
Date	Time	Weather	Measurement Noise Level			Baseline Level	Construction Noise Level	Limit Level
			Leq	L10	L90	Leq	Leq	Leq
Unit: dB(A), (30-min)								
30/9/19	15:44	Fine	67.2	72.7	62.3	69	67	75
8/10/19	16:20	Cloudy	68.2	73.0	63.2	69	68	75
14/10/19	16:34	Rainy	66.9	71.8	61.4	69	67	75
22/10/19	16:55	Fine	66.7	71.7	60.8	69	67	75

Location: M8 - City Hall

Date	Time	Weather	Measurement Noise Level			Baseline Level	Construction Noise Level	Limit Level
			Leq	L10	L90	Leq	Leq	Leq
Unit: dB(A), (30-min)								
2/10/19	14:02	Fine	63.1	65.9	58.7	64	63	70
8/10/19	17:01	Cloudy	63.3	66.8	58.4	64	63	70
16/10/19	15:49	Cloudy	63.8	67.7	58.0	64	64	70
22/10/19	15:36	Fine	62.5	66.9	58.7	64	63	70

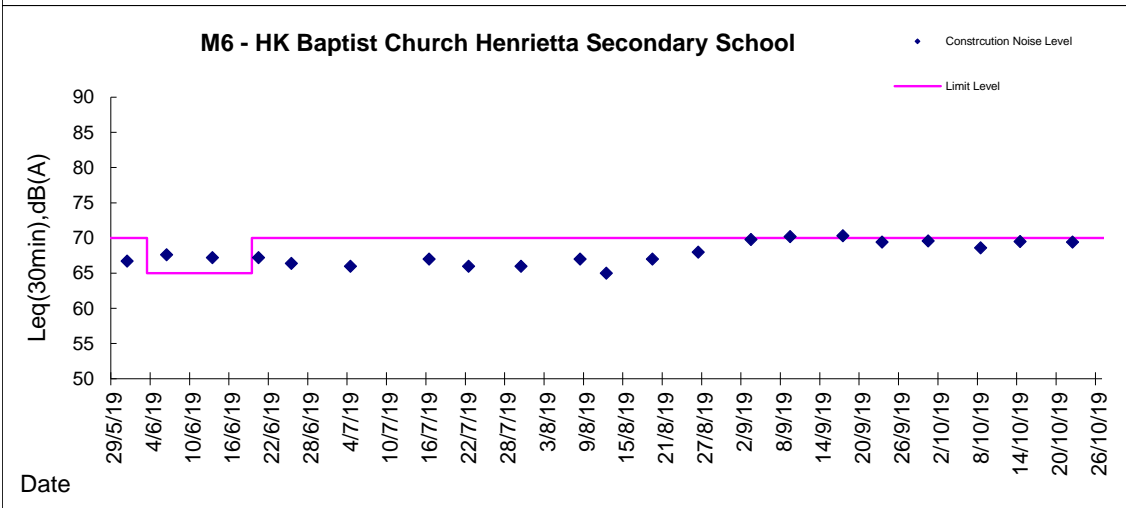
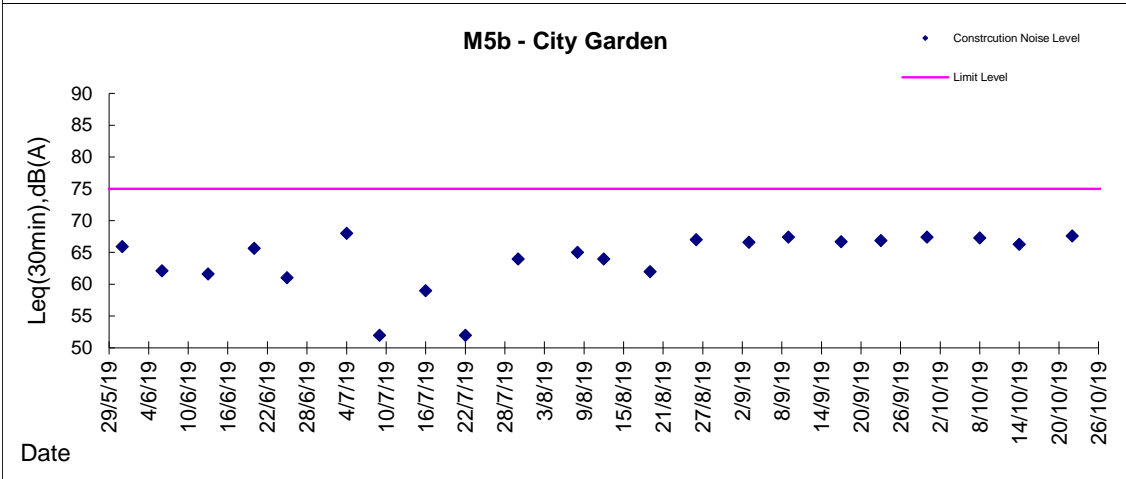
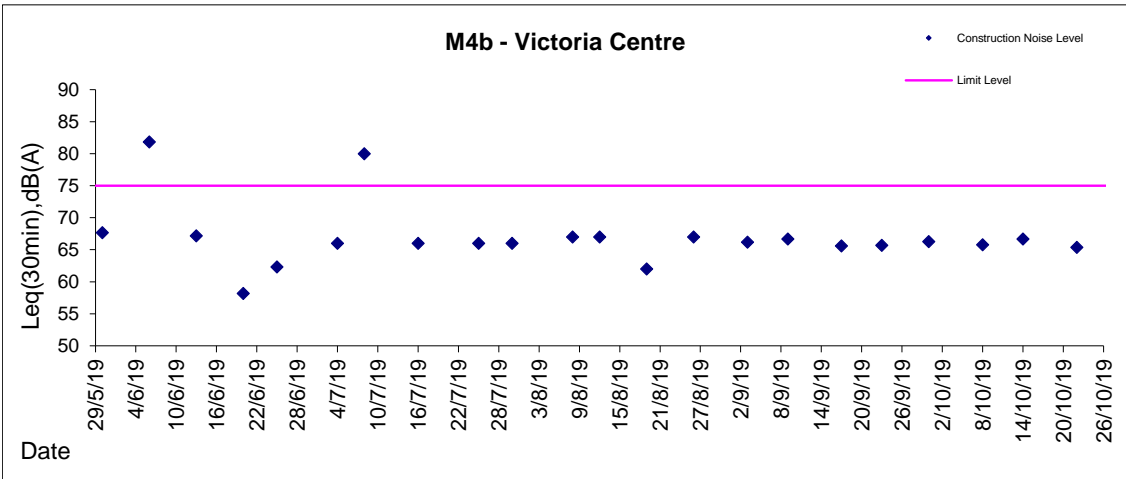


Graphic Presentation of Noise Monitoring Result
Day Time (0700 - 1900hrs on normal weekdays)



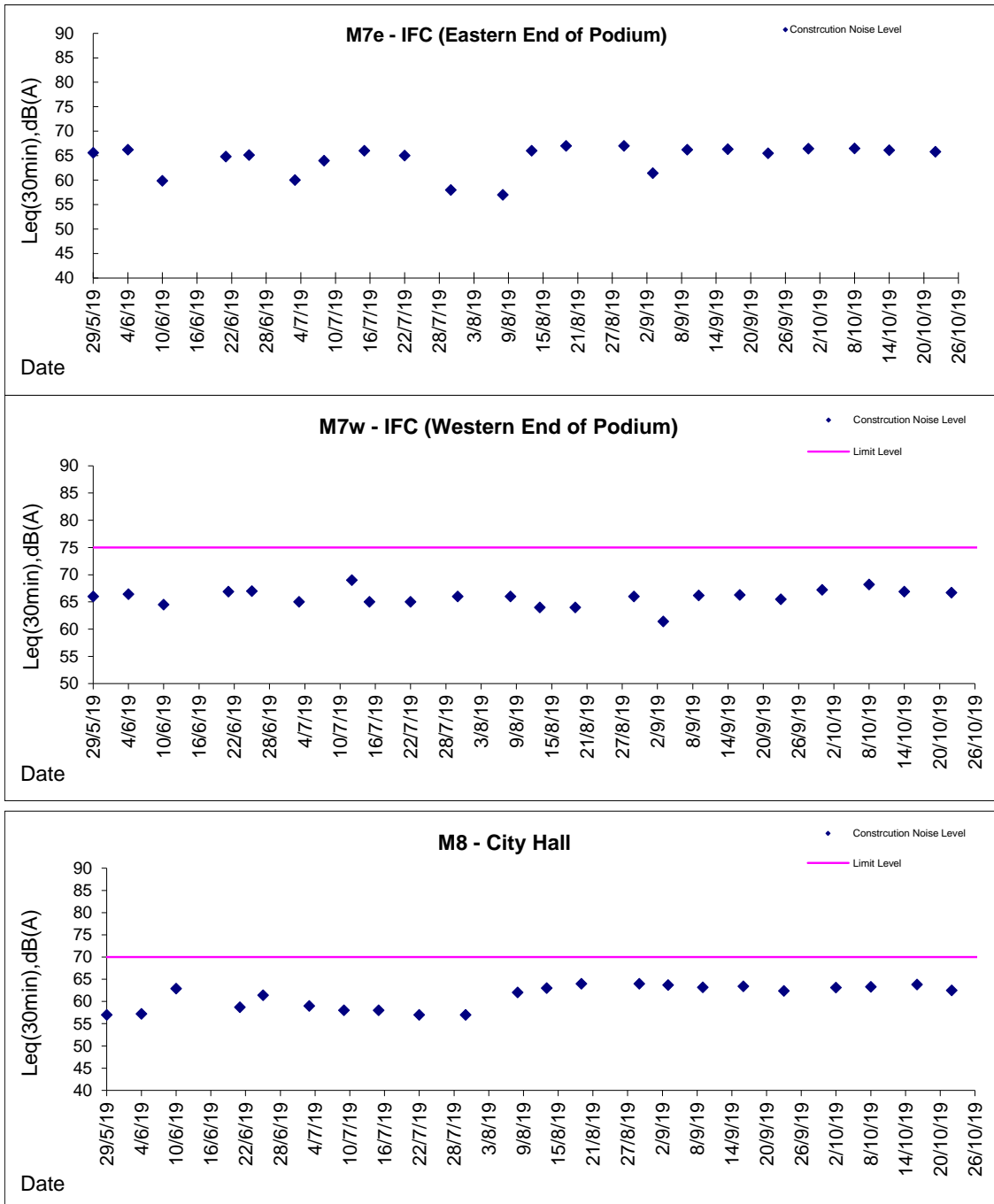


Graphic Presentation of Noise Monitoring Result
Day Time (0700 - 1900hrs on normal weekdays)



Graphic Presentation of Noise Monitoring Result

Day Time (0700 - 1900hrs on normal weekdays)



* Remark: M7e - IFC (Eastern End of Podium) is a reference monitoring station